



Understanding accelerators and overcoming barriers to IPC guideline development or adaptation

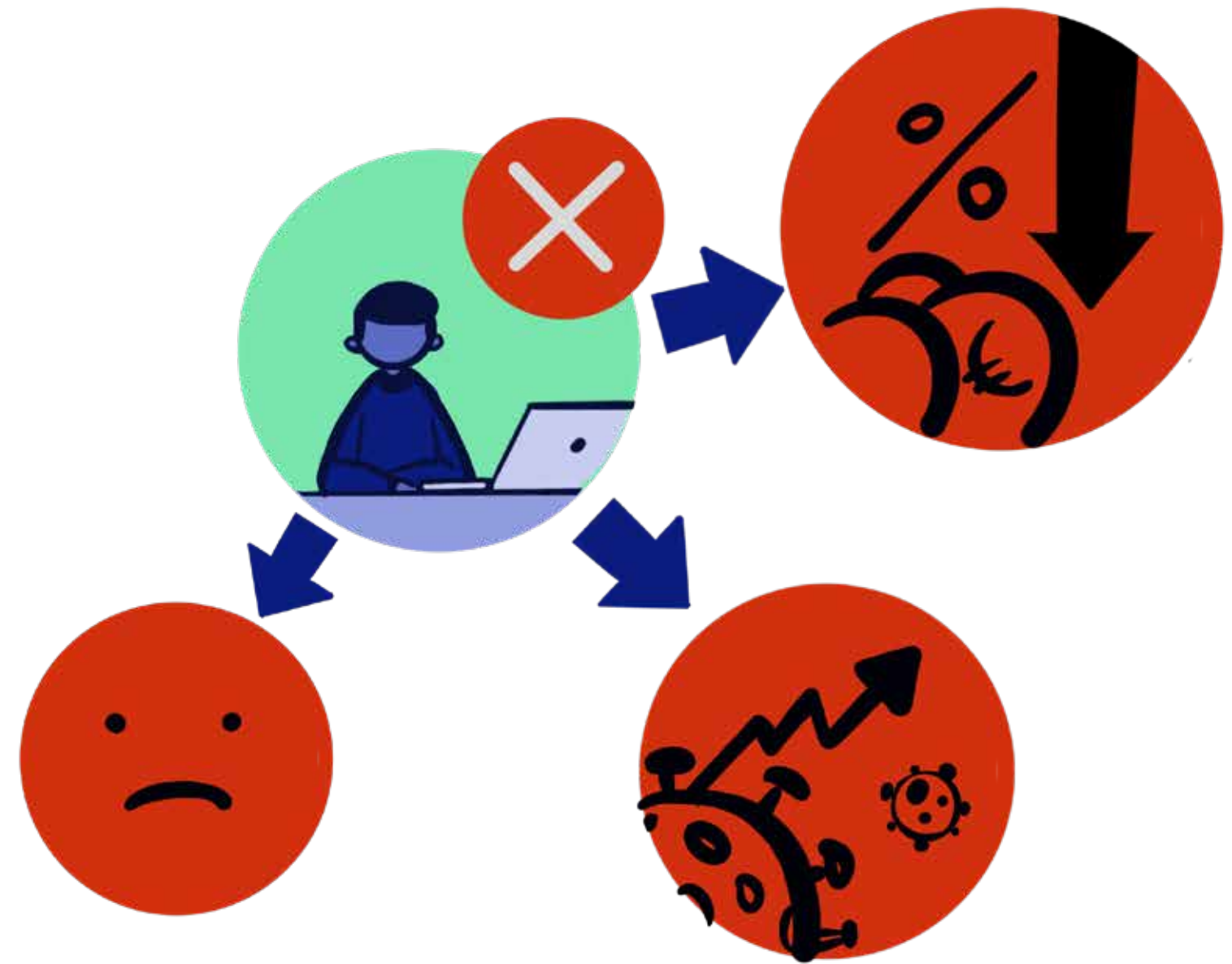
Explaining the when, how and why of
using the country **roadmap** approach

**“ Evidence based guidelines
should be developed and implemented
for the purposes of reducing HAI and AMR ”
(WHO, 2016)***

**The WHO Regional Office for Europe is committed to
the successful implementation of the core
components of infection prevention and control (IPC)
programmes, one of which is evidence based
guidelines.**

*Guidelines on core components of infection prevention and control programmes at the national and acute health care facility level. Geneva: World Health Organization; 2016 (<https://apps.who.int/iris/handle/10665/251730>, accessed 27 April 2022).

Inaction is not an option.
That is why a WHO Europe roadmap exists to outline the journey to IPC guideline development or adaptation, and importantly to present known barriers and accelerators.



In summary, the journey (or roadmap) includes addressing proposed actions that are based on country experiences and are outlined within 5 steps that will lead to IPC guideline publication.



WHEN TO USE THE ROADMAP TO DEVELOP OR ADAPT AN IPC GUIDELINE



- when reviewing incidence data and addressing improvement
- when addressing IPC programme priorities/planning
- during review of out-of-date guidelines
- in outbreak situations
- due to local demand, i.e. pressure from professionals/patients
- at times when guideline submission proposals are due (e.g. annually to secure budget)
- to adopt a global guideline for application at local level

HOW TO USE THE ROADMAP

Specific cases

Guideline kick off meeting

To discuss the steps to be taken during a kick off meeting, arranged with a wide range of people to plan the new guideline – with the roadmap printed and on the table.



HOW TO USE THE ROADMAP

Specific cases

Guideline meeting request

To present the outline when requested to meet the lead for guideline development – with a printed copy to give them and to talk to.



HOW TO USE THE ROADMAP

Specific cases

IPC team meetings

To remind the team of their roles and responsibilities related to the guideline steps during IPC team meetings – on the screen (or printed).

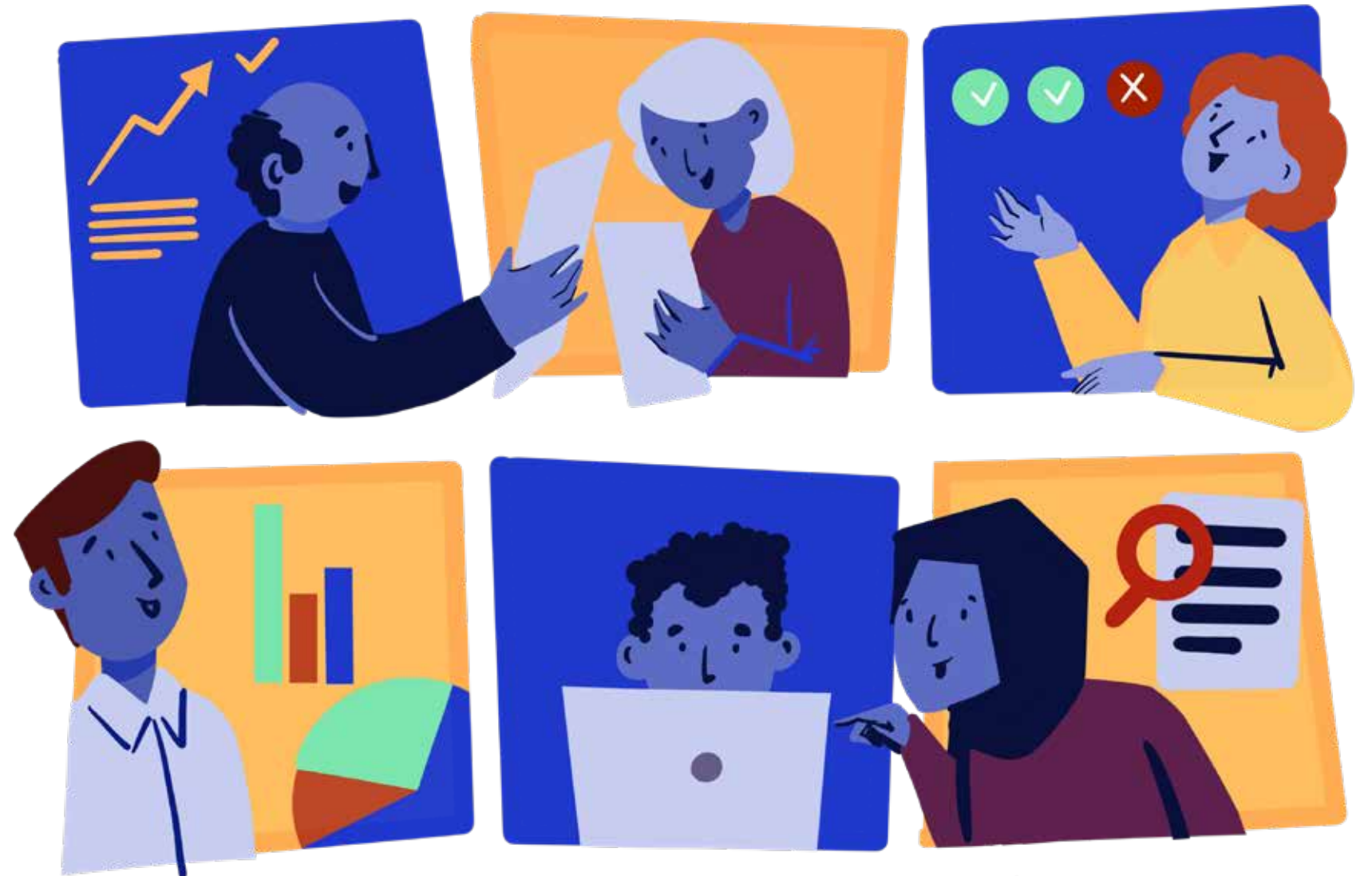


HOW TO USE THE ROADMAP

Specific cases

On-going guideline development meetings

As a constant recap on all the steps in the guideline development process during meetings – on the computer screen.



HOW TO USE THE ROADMAP

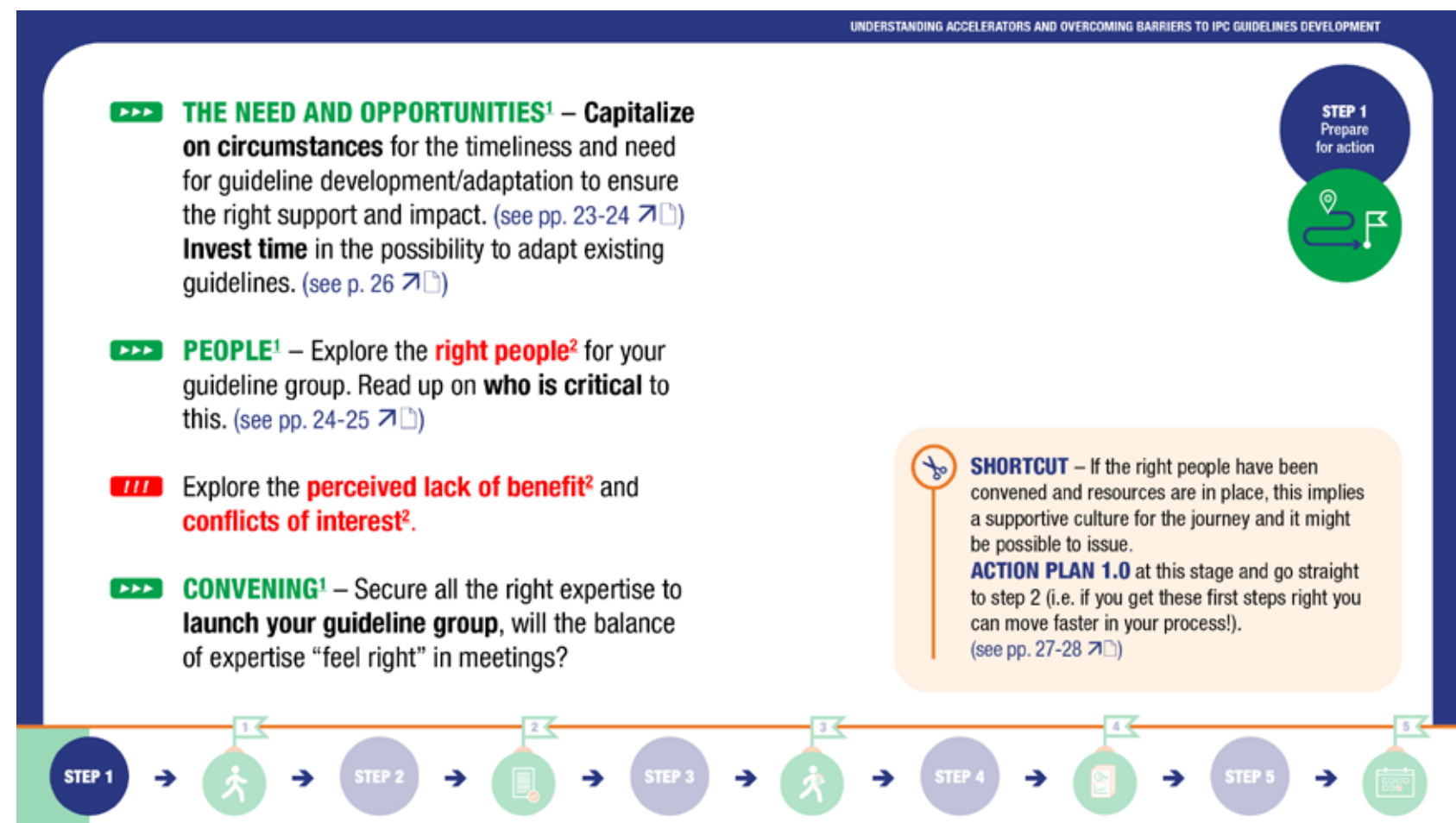
Specific cases

At the desk

Regularly during the working day of IPC focal points when planning next steps on how to effectively intervene in guideline development meetings – likely on the computer screen.

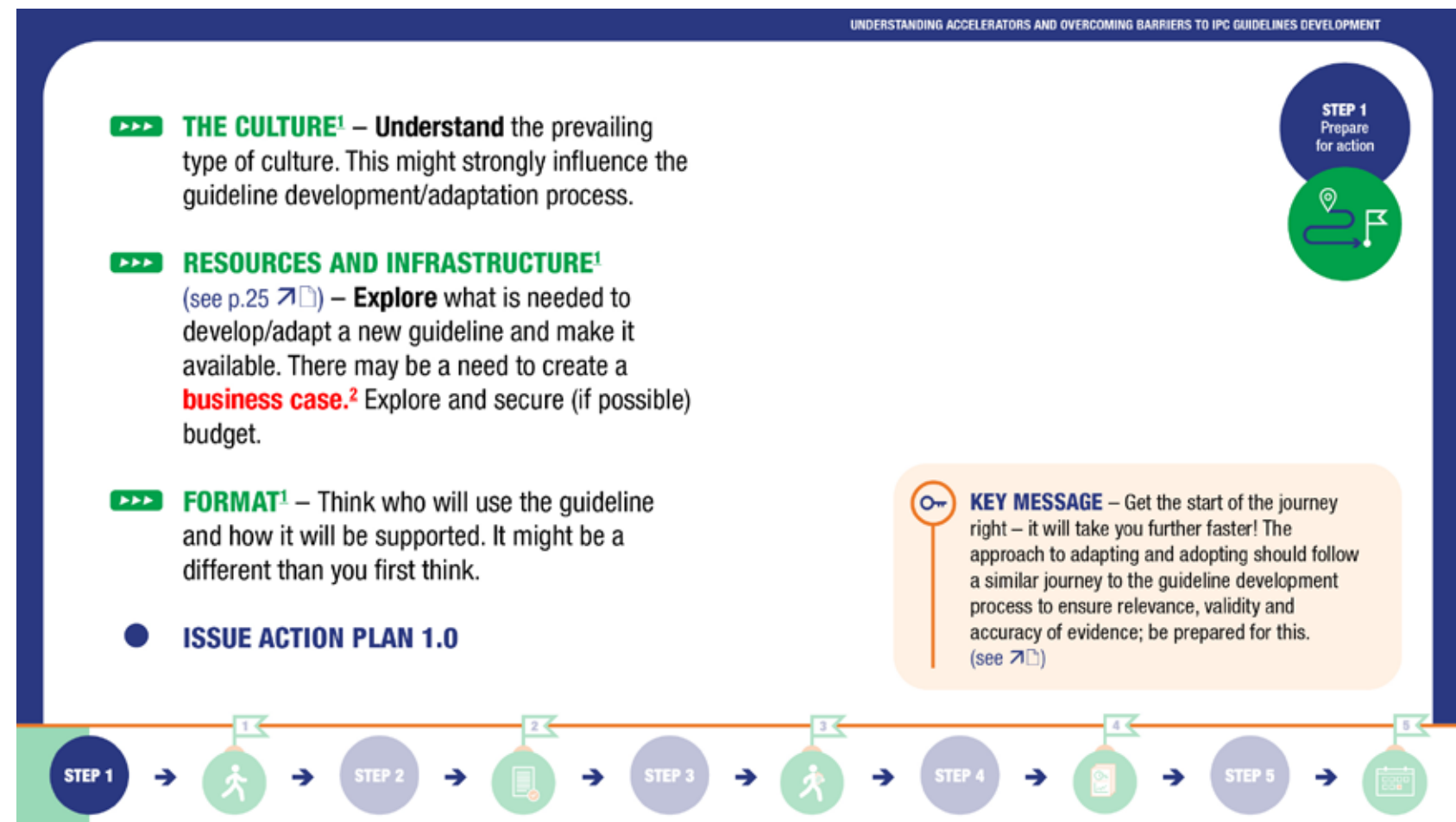


WHY USE THE ROADMAP



Accelerators  and barriers  within each of the 5 steps are based on country experiences and specifically guide the IPC guideline development/adaptation journey. Further reading at the end of the roadmap is available where indicated.

WHY USE THE ROADMAP



WHY USE THE ROADMAP

In summary, following the journey outlined in the 5 steps will:

- provide you with key milestones to meet, and importantly accelerators and barriers to help you progress guideline development/adaptation;
- outline how you can follow a cyclical approach to IPC guideline publication as part of an IPC programme of work;
- provide you with further reading information to help you ultimately achieve success – ***publication of a current, relevant IPC guideline.***



